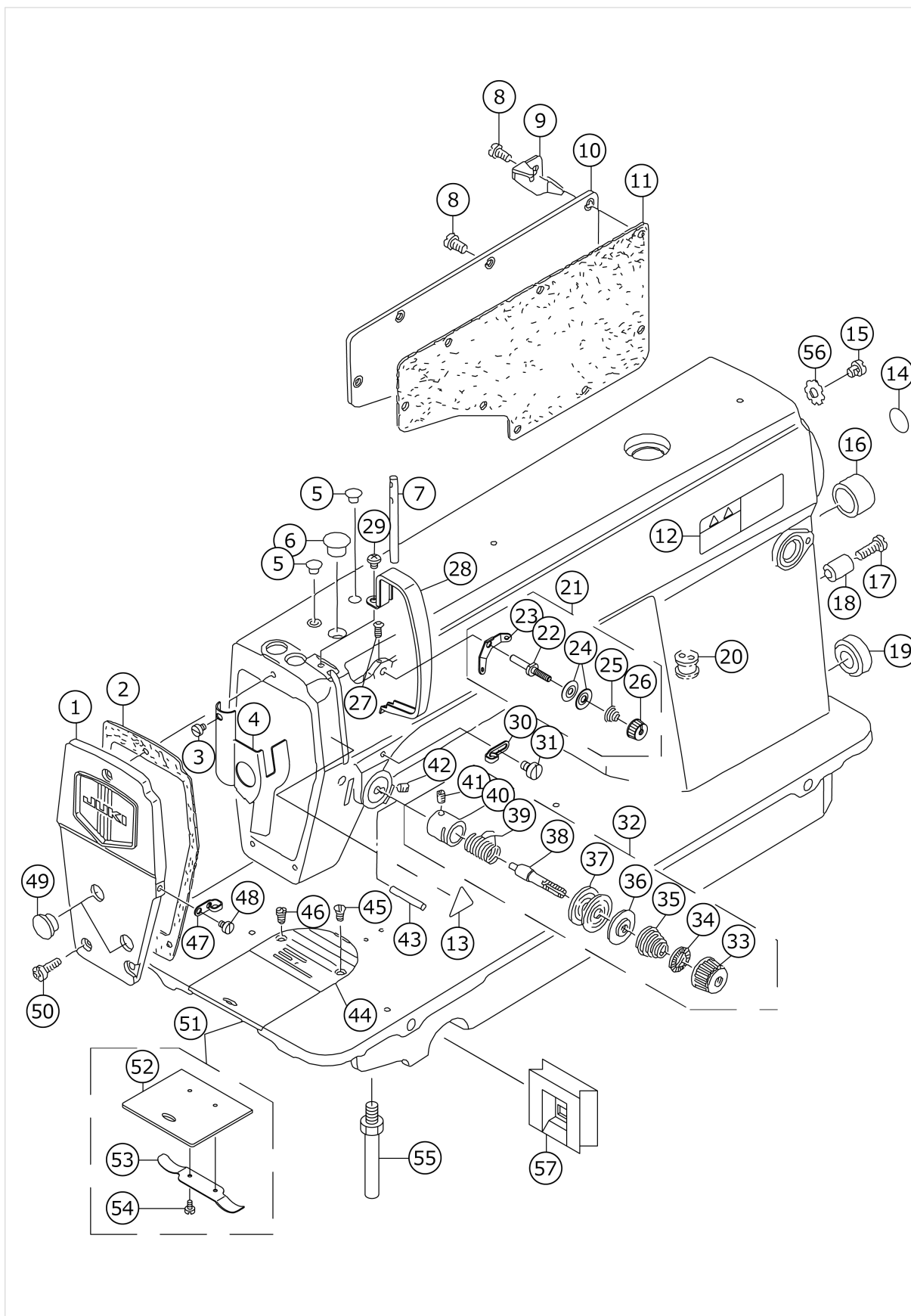


DDL-5571N/DDL-5581N

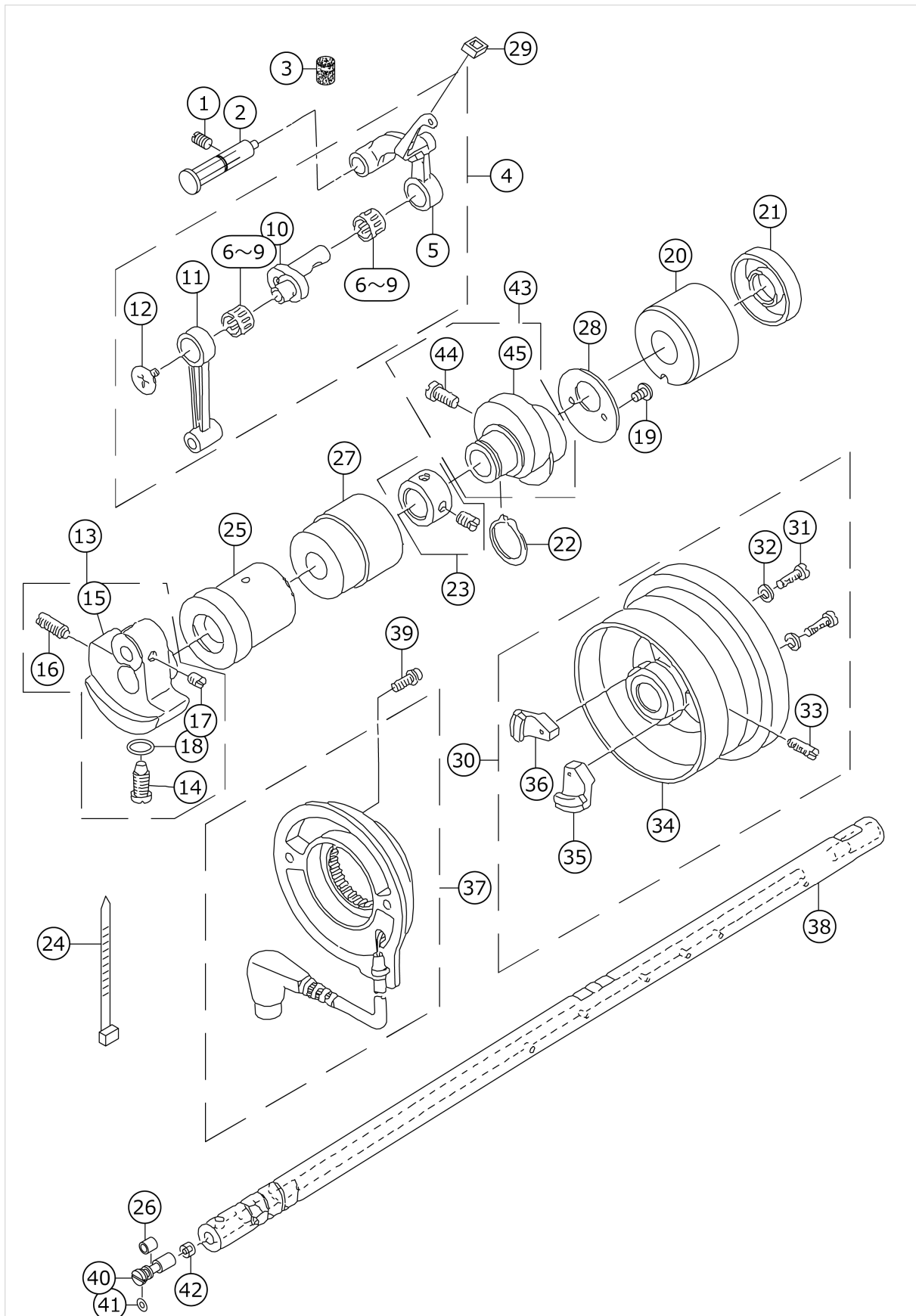
MACHINE FRAME & MISCELLANEOUS COVER COMPONENTS



No.	品番	品名	備考	子部品	消耗品	個数
1	11070851	FACE PLATE ASM.				1.00
2	11000304	FACE PLATE GASKET				1.00
3	SS6080410SP	SCREW 1/8-44 L=4				1.00
4	22900757	FACE PLATE OIL SHIELD ASM.				1.00
5	TA0850604R0	RUBBER PLUG				2.00
6	TA1250705R0	RUBBER PLUG				1.00
7	22958300	NEEDLE THREAD GUIDE PIN				1.00
8	SS4120915SP	SCREW 3/16-28 L=9				8.00
9	22954705	CORD FIXING METAL FITTING				1.00
10	22900401	WINDOW PLATE				1.00
11	11003308	WINDOW PLATE GASKET				1.00
12	CM301300001	SAFETY LABEL				1.00
13	CM300200001	ATTENTION SEAL				1.00
14	22901805	GROUND MARK				1.00
15	SS4120615SP	SCREW 3/16-28 L=6				1.00
16	TA2000502R0	RUBBER PLUG				1.00
17	SS6121840SP	SCREW 3/16-28 L=18				1.00
18	22952501	BACK LEVER STOPPER				1.00
19	TA2101002R0	RUBBER PLUG				1.00
20	40111022	MAGNET CORD RUBBER				1.00
21	22945463	THREAD TENSION ASM. NO.1				1.00
22	22945406	THREAD TENSION POST		*		1.00
23	22945604	THREAD TENSION GUIDE		*		1.00
24	22945802	THREAD TENSION DISK		*		2.00
25	22945505	THREAD TENSION SPRING		*		1.00
26	22945703	THREAD TENSION NUT		*		1.00
27	SS4120615SP	SCREW 3/16-28 L=6				1.00
28	22900609	THREAD TAKE-UP LEVER COVER				1.00
29	SS4120615SP	SCREW 3/16-28 L=6				1.00
30	22920508	ARM THREAD GUIDE A				1.00
31	22921001	SCREW				1.00
32	22945356	THREAD TENSION ASM.				1.00
33	22921308	THREAD TENSION NUT		*		1.00
34	22921407	ROTATION STOPPER		*		1.00
35	22921704	THREAD TENSION SPRING A		*		1.00
36	22921803	DISK STOPPER		*		1.00
37	22921506	THREAD TENSION DISK		*		2.00
38	22921209	THREAD TENSION POST		*		1.00
39	22921605	THREAD TAKE-UP SPRING		*		1.00
40	22945307	THREAD TENSION POST BASE		*		1.00
41	SS8090670SP	SCREW 9/64-40 L=5.5		*		1.00
42	SS8150710SP	SCREW 15/64-28 L=7				1.00
43	22920904	TENSION RELEASING				1.00
44	11028008	THROAT PLATE				1.00
45	SS2110920TP	SCREW 11/64-40 L=8.5				1.00
46	SS2110915SP	SCREW 11/64-40 L=8.5				1.00
47	22920607	ARM THREAD GUIDE B				1.00
48	SS6110610TP	SCREW 11/64-40 L=6				1.00
49	TA1250406R0	RUBBER PLUG D=12.5 L=4				2.00
50	SS4120915SP	SCREW 3/16-28 L=9				3.00

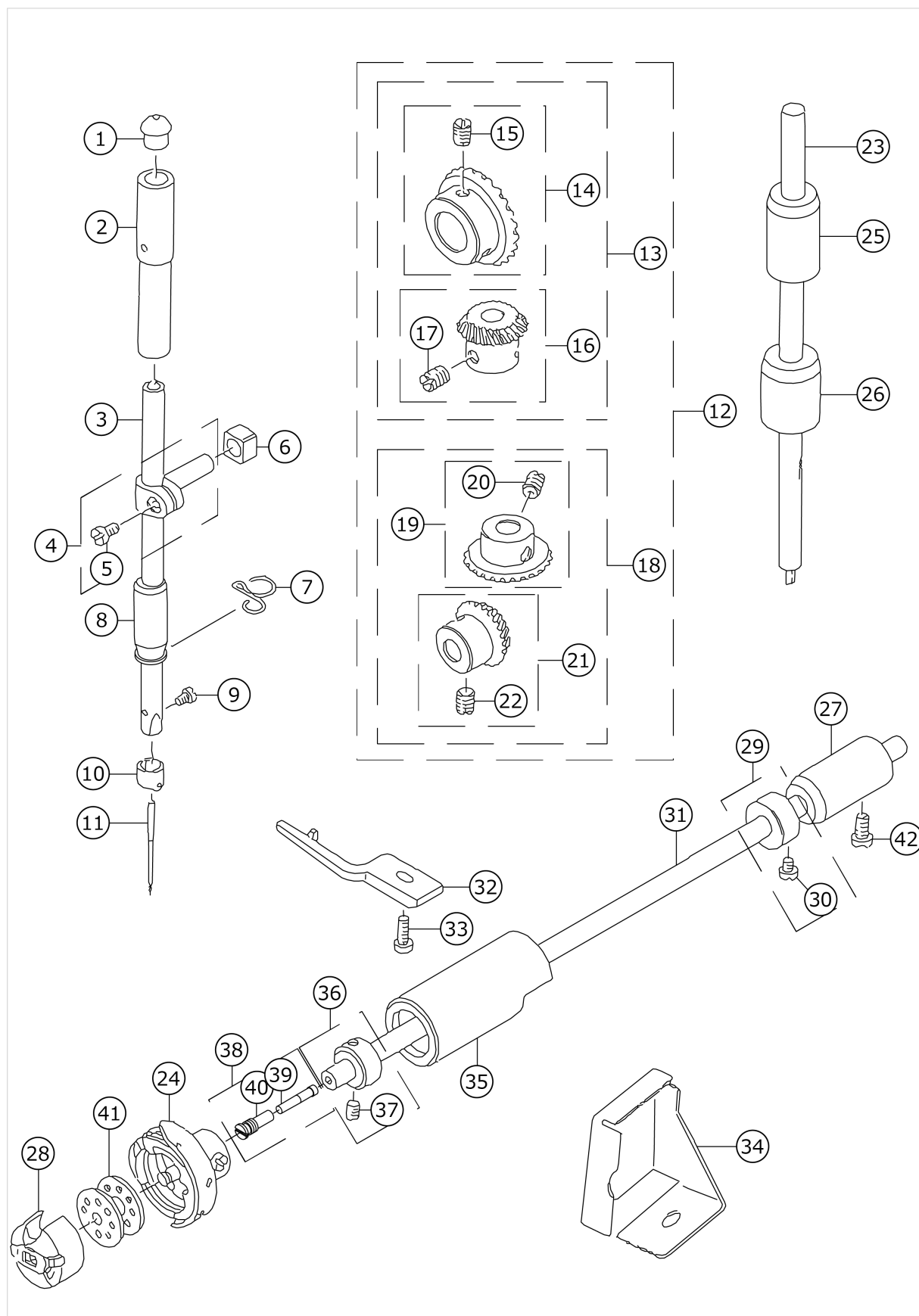
51	22901250	SLIDE PLATE ASM.				1.00
52	22901201	SLIDE PLATE		*		1.00
53	22901300	SLIDE PLATE SPRING		*		1.00
54	SS6060210SP	SCREW 3/32-56 L=1.9		*		2.00
55	22901003	BED SCREW STUD				4.00
56	WT0530002KS	TOOTHED WASHER D=5.3				1.00
57	22935407	BED OIL SHIELD RUBBER				1.00

# MAIN SHAFT COMPONENTS



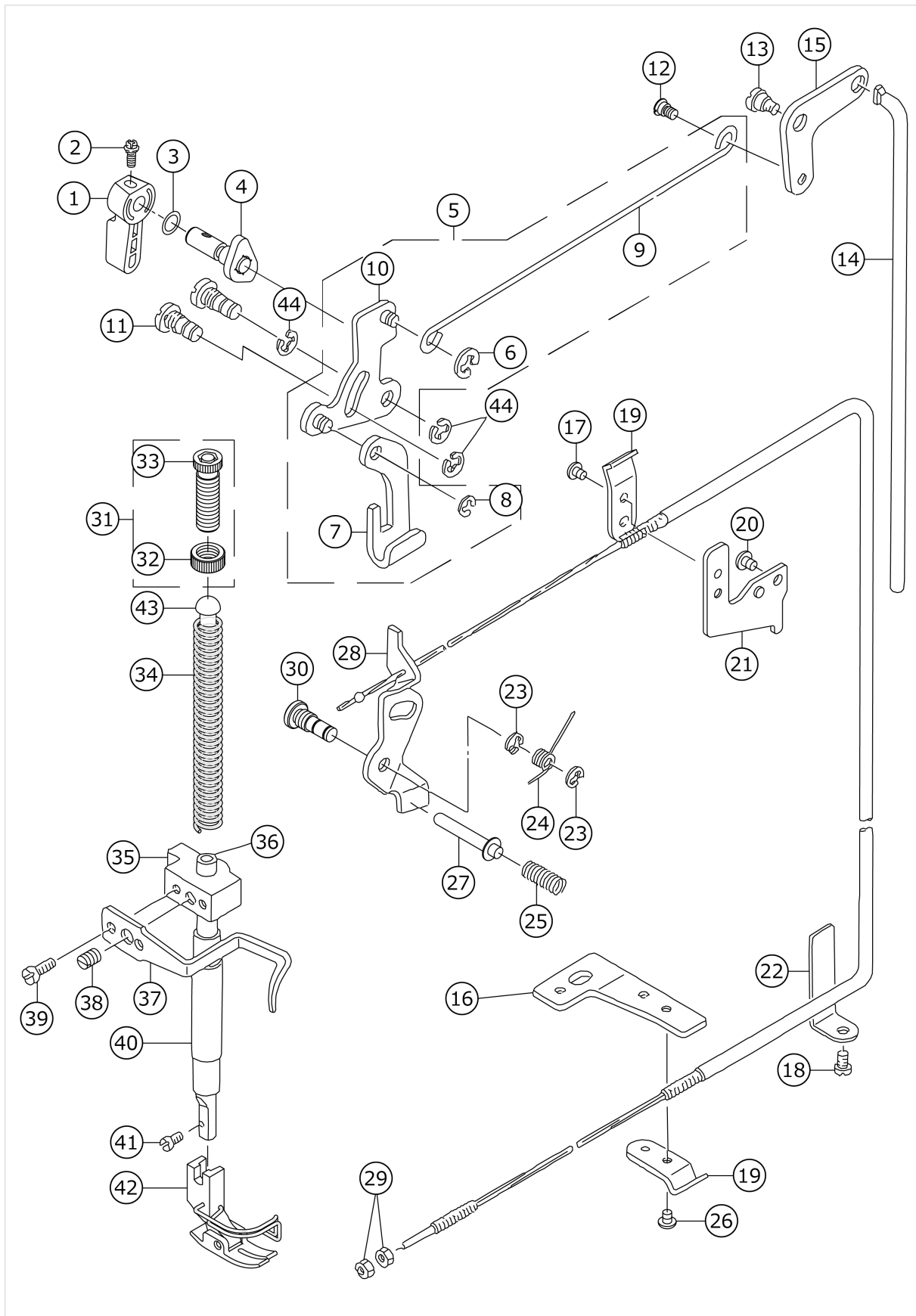
No.	品番	品名	備考	子部品	消耗品	個数
1	SS8151150TP	SCREW 15/64-28 L=10.5				1.00
2	11039351	CRANK SHAFT ASM.				1.00
3	11039203	FELT				1.00
4	22918072	THREAD TAKE-UP LEVER COMPL.				1.00
5	22918064	THREAD TAKE-UP LEVER ASM.		*		1.00
6	22918403	NEEDLE BEARING A	SELECTING PART(A - D)	*		2.00
7	22918502	NEEDLE BEARING B	SELECTING PART(A - D)	*		2.00
8	22918601	NEEDLE BEARING C	SELECTING PART(A - D)	*		2.00
9	22918700	NEEDLE BEARING D	SELECTING PART(A - D)	*		2.00
10	22918106	NEEDLE BAR CRANK		*		1.00
11	22906606	NEEDLE BAR CRANK ROD		*		1.00
12	22918304	LEFT SCREW		*		1.00
13	40106606	COUNTER_WEIGHT_ASM.				1.00
14	SS7681650TP	SCREW 9/32-28 L=16		*		1.00
15	40106607	COUNTER_WEIGHT		*		1.00
16	SS8681650TP	SCREW 9/32-28 L=16		*		1.00
17	SS8660610TP	SCREW 1/4-40 L=6		*		2.00
18	RO044240100	RUBBER RING		*		1.00
19	SS4090615SP	SCREW 9/64-40 L=6				2.00
20	11002409	MAIN SHAFT BUSHING REAR				1.00
21	40105231	OIL SEAL				1.00
22	RC1850001KP	SNAP RING 18.5				1.00
23	22904155	MAIN SHAFT THRUST COLLAR ASM.				1.00
24	EA9500B0100	CABLE BAND				1.00
25	22903207	MAIN SHAFT BUSHING FRONT				1.00
26	B1215552000	OIL ADJUSTING COLLAR				1.00
27	22903306	BUSHING INTERMEDIATE				1.00
28	22910103	THRUST COLLAR				1.00
29	22919203	OIL PROTECTING RUBBER				1.00
30	11071495	HAND WHEEL ASM.				1.00
31	SS6111210SP	SCREW 11/64-40 L=12		*		2.00
32	WP0450801SD	WASHER 4.5X10X0.8		*		2.00
33	SS8151550SP	SCREW 15/64-28 L=15		*		2.00
34	11071453	HAND WHEEL ASM.		*		1.00
35	M40071100AA	MAGNET FITTING BASE A ASM.		*		1.00
36	M40071100AB	MAGNET FITTING BASE B ASM.		*		1.00
37	22937965	DYNAMO STATOR				1.00
38	22903009	MAIN SHAFT				1.00
39	SL4051001MZ	SCREW M5 L=9.6				2.00
40	22903900	ADJUSTING PIN				1.00
41	RO029180100	RUBBER RING				1.00
42	11002904	ROLLER FELT				1.00
43	22910053	FEED DRIVE ECCENTRIC CAM ASM.				1.00
44	SS6661110SP	SCREW 1/4-40 L=11		*		2.00
45	22910004	FEED DRIVE ECCENTRIC CAM		*		1.00

# NEEDLE BAR, UPRIGHT SHAFT & HOOK DRIVING SHAFT COMPONENTS



No.	品番	品名	備考	子部品	消耗品	個数
1	22901409	NEEDLE BAR UPPER BUSH CAP				1.00
2	22906101	NEEDLE BAR BUSHING UPPER				1.00
3	11035003	NEEDLE BAR				1.00
4	22906457	NEEDLE BAR HOLDER ASM.				1.00
5	SS6090670TP	SCREW 9/64-40 L=6		*		1.00
6	40090058	SLIDE BLOCK				1.00
7	22920805	NEEDLE BAR THREAD GUIDE				1.00
8	22906200	NEEDLE BAR BUSHING LOWER				1.00
9	SS7080510TP	SCREW 1/8-44 L=4.5				1.00
10	22906309	NEEDLE BAR THREAD GUIDE				1.00
11	MDB100B1100	NEEDLE DBX1 #11				1.00
12	B13061550C0	GEAR & PINION ASM.				1.00
13	B13061550B0	GEAR & PINION ASM. UPPER		*		1.00
14	B13050120A0	GEAR ASM.		*		1.00
15	SS8660810TP	SCREW 1/4-40 L=8		*		2.00
16	B13061550A0	PINION ASM.		*		1.00
17	SS8660810TP	SCREW 1/4-40 L=8		*		2.00
18	B13071550B0	GEAR & PINION ASM. LOWER		*		1.00
19	B13071550A0	GEAR ASM. LARGE		*		1.00
20	SS8660810TP	SCREW 1/4-40 L=8		*		2.00
21	B13081550A0	PINION ASM.		*		1.00
22	SS8660810TP	SCREW 1/4-40 L=8		*		2.00
23	22905004	UPRIGHT SHAFT				1.00
24	11038650	HOOK ASM.				1.00
25	22905103	UPRIGHT SHAFT BUSHING UPPER				1.00
26	11004207	UPRIGHT SHAFT BUSHING LOWER				1.00
27	22916308	HOOK DRIVING SHAFT BUSH REAR				1.00
28	11038759	BOBBIN CASE ASM.				1.00
29	22917157	THRUST COLLAR ASM. REAR				1.00
30	SS6110420TP	SCREW 11/64-40 L=4.8		*		2.00
31	22916001	HOOK DRIVING SHAFT				1.00
32	11038809	BOBBIN CASE HOLDER				1.00
33	SS4110915TP	SCREW 11/64-40 L=9				1.00
34	22942601	OIL SHIELD				1.00
35	22916100	HOOK DRIVING SHAFT BUSH FRONT				1.00
36	22917058	THRUST COLLAR ASM. FRONT				1.00
37	SS8110410TP	SCREW 11/64-40 L=3.5		*		2.00
38	22916555	OIL SEAL SCREW ASM.				1.00
39	11015906	OIL WICK		*		1.00
40	22916506	SET SCREW		*		1.00
41	22932909	BOBBIN				1.00
42	SS4120915SP	SCREW 3/16-28 L=9				1.00

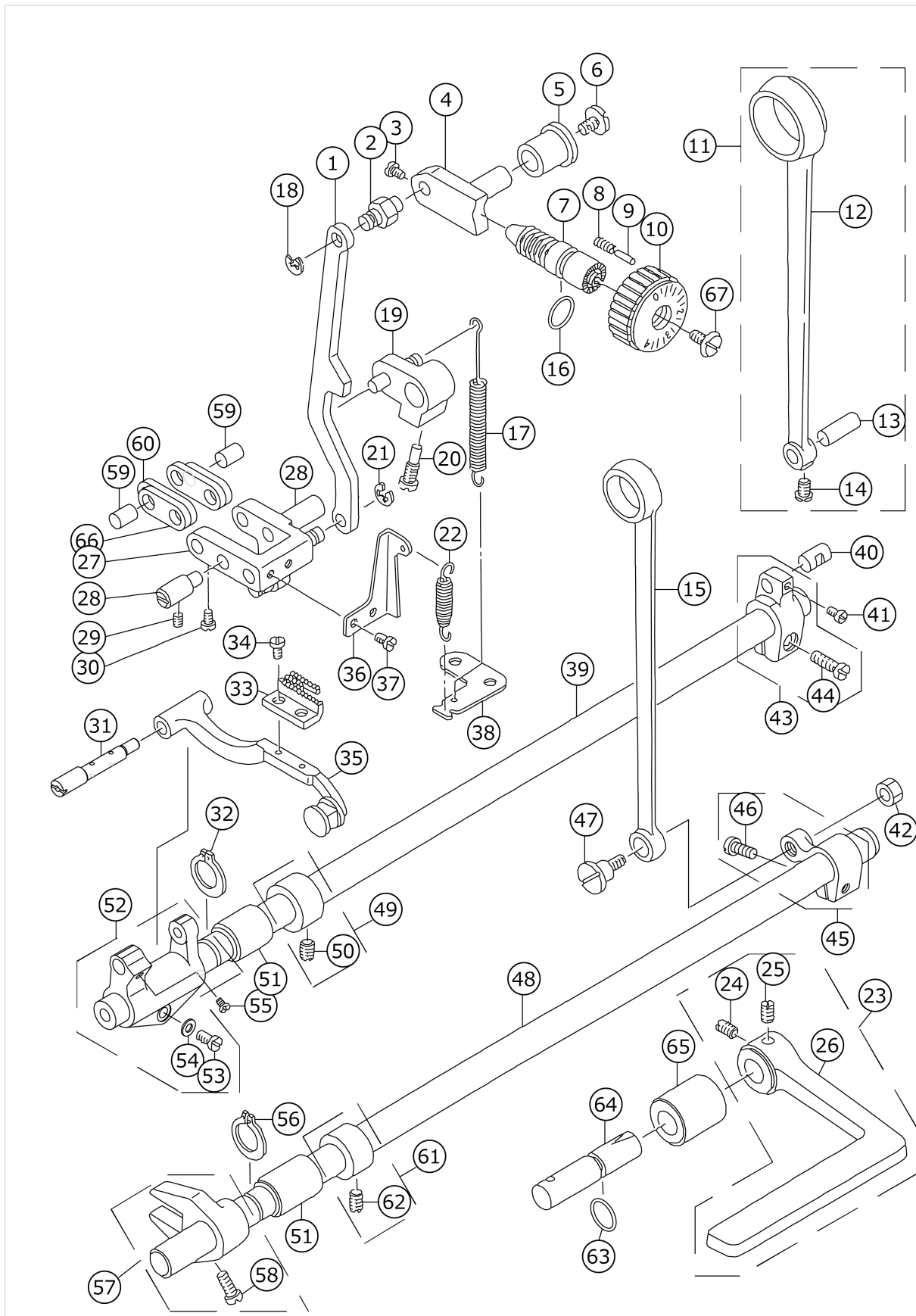
# HAND LIFTER COMPONENTS





No.	品番	品名	備考	子部品	消耗品	個数
1	22907802	HAND LIFTER				1.00
2	B1521555000	SCREW				1.00
3	RO037180100	RUBBER RING				1.00
4	22908552	HAND LIFTER CAM ASM.				1.00
5	22908354	KNEE LIFTING CROSS ROD ASM.				1.00
6	RE0500000K0	E-RING		*		1.00
7	22908008	LIFTING PLATE		*		1.00
8	RE0500000K0	E-RING		*		1.00
9	22908305	KNEE LIFTER SIDE ROD		*		1.00
10	22908156	LIFTING LINK ASM.		*		1.00
11	22908701	LIFTING LINK SHAFT				2.00
12	22908909	HINGE SCREW				1.00
13	SD0720331SP	HINGE SCREW D=7.24 H=3.3				1.00
14	22909006	KNEE LIFTER CONNECTING ROD				1.00
15	22908800	KNEE LIFTER LINK				1.00
16	22944706	WIRE PRESSER BASE LOWER				1.00
17	SS4110515SP	SCREW 11/64-40 L=5				1.00
18	SS4120615SP	SCREW 3/16-28 L=6				1.00
19	22944508	WIRE PRESSER A				2.00
20	SS4120615SP	SCREW 3/16-28 L=6				1.00
21	22944607	WIRE PRESSER BASE UPPER				1.00
22	22945109	WIRE CABLE SUPPORT				1.00
23	RE0500000K0	E-RING				2.00
24	22920201	RETURN SPRING				1.00
25	22920409	THREAD RELEASE PIN SPRING				1.00
26	SS4110515SP	SCREW 11/64-40 L=5				1.00
27	22920300	THREAD RELEASE SUPPORTING PIN				1.00
28	22944854	THREAD RELEASE WIRE ASM.				1.00
29	NS6620310SP	NUT 3/16-32				2.00
30	22920102	THREAD RELEASE SHAFT				1.00
31	22907554	FEED REGULATOR SCREW NUT ASM.				1.00
32	22907604	PRESSER SPRING REGULATOR NUT		*		1.00
33	22907505	PRESSER SPRING REGULATOR		*		1.00
34	22907406	PRESSER SPRING				1.00
35	22907208	PRESSER BAR GUIDE BRACKET				1.00
36	40017805	PRESSER BAR				1.00
37	22907307	THREAD GUIDE				1.00
38	SS8660810TP	SCREW 1/4-40 L=8				1.00
39	SS6090810SP	SCREW 9/64-40 L=7.5				2.00
40	40060989	PRESSER BAR BUSHING LOWER				1.00
41	SS7091110SP	SCREW 9/64-40 L=10.5				1.00
42	11028172	PRESSER FOOT ASM.				1.00
43	22907703	PRESSER GUIDE BAR				1.00
44	RE0500000K0	E-RING				3.00

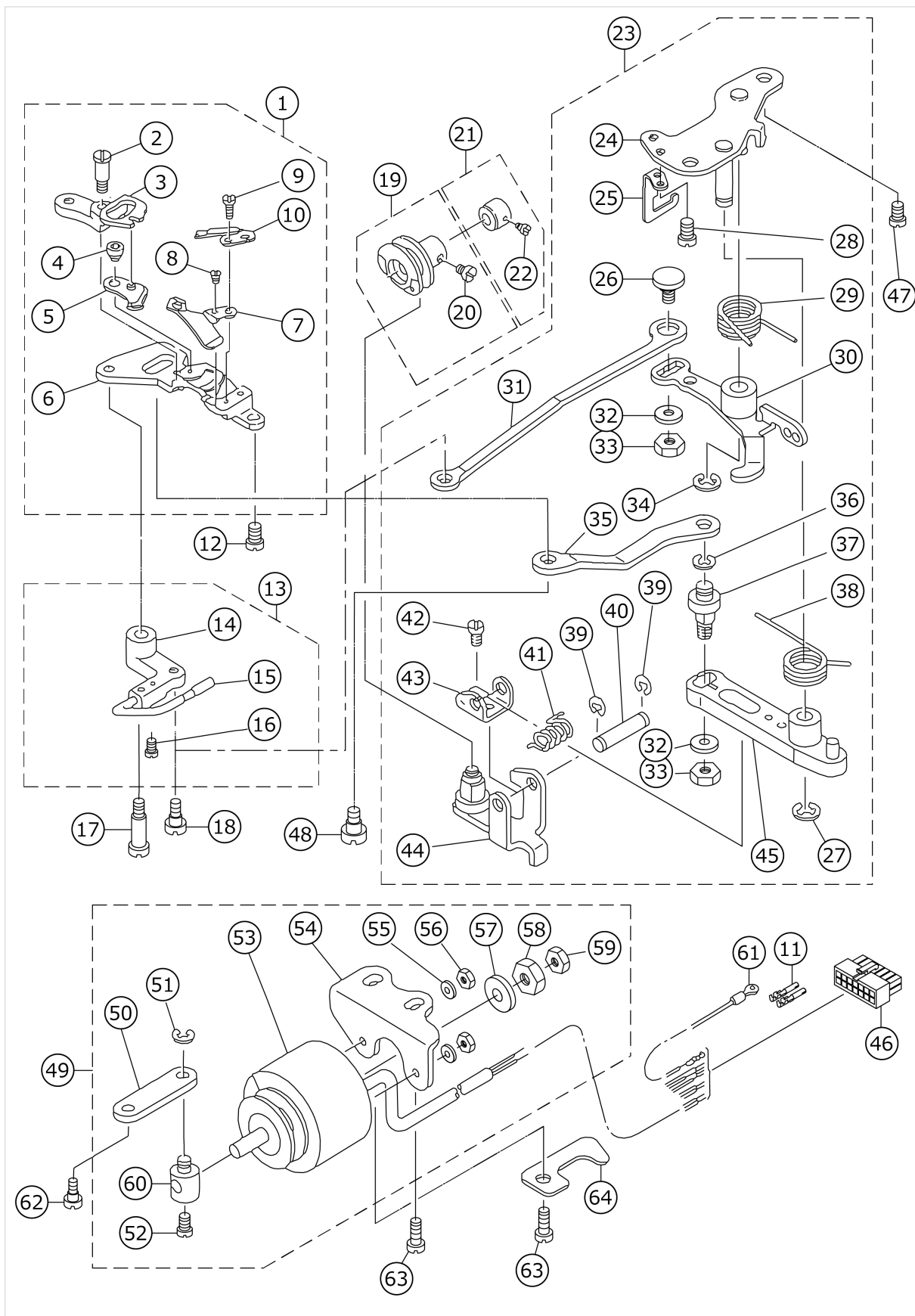
# FEED MECHANISM COMPONENTS



No.	品番	品名	備考	子部品	消耗品	個数
1	22941108	FEED ADJUST ROD				1.00
2	22911507	WALKING FOOT PIN C				1.00
3	SS6090670TP	SCREW 9/64-40 L=6				2.00
4	22911606	FEED REGULATOR				1.00
5	11009800	FEED REGULATOR BUSHING				1.00
6	SS7120770SH	SCREW 3/16-28 L=7				1.00
7	22911804	FEED REGULATOR SCREW				1.00
8	22912109	FEED REGULATOR PIN SPRING				1.00
9	22912000	FEED REGULATOR PIN				1.00
10	22940506	FEED DIAL				1.00
11	22910251	ROCKER SHAFT CONNECTING ROD ASM.				1.00
12	22910202	ROCKER SHAFT CONNECTING ROD		*		1.00
13	22911101	WALKING FOOT PIN C		*		1.00
14	SS6090620TP	SCREW		*		1.00
15	22915003	CONNECTING ROD				1.00
16	RO092270200	RUBBER RING				1.00
17	11010311	FEED REVERSE SPRING				1.00
18	RE0500000K0	E-RING				1.00
19	22912257	FEED REVERSE ARM ASM.				1.00
20	22912505	FEED REVERSE ARM SCREW				1.00
21	RE0500000K0	E-RING				1.00
22	11037405	SPRING				1.00
23	22912752	FEED LEVER ASM.				1.00
24	SM8061010TP	SCREW M6 L=10		*		1.00
25	SM8061050TP	SCREW M6 L=10		*		1.00
26	22912703	FEED LEVER		*		1.00
27	22940951	FEED ADJUST LINK ASM.				1.00
28	22910806	ADJUST LINK FULCRUM SHAFT A				2.00
29	SS8150710TP	SCREW 15/64-28 L=7				2.00
30	SS6090620TP	SCREW				2.00
31	22940803	FEED BAR SHAFT				1.00
32	RC0150001KP	RETAINING RING 13.8				1.00
33	B1613012A00	FEED DOG A				1.00
34	SS4080620TP	SCREW 1/8-44 L=6				2.00
35	22940753	FEED BAR ASM.				1.00
36	22941306	REGULATOR LINK SPRING HOOK				1.00
37	SS4110515SP	SCREW 11/64-40 L=5				2.00
38	22913701	FEED SPRING HOOK				1.00
39	22912901	FEED ROCKER SHAFT				1.00
40	22911002	WALKING FOOT PIN B				1.00
41	SS6090620TP	SCREW				1.00
42	NS6680410SP	NUT 9/32-28				1.00
43	22910350	FEED ROCKER SHAFT CRANK ASM.				1.00
44	SS6121610SP	SCREW 3/16-28 L=15.5		*		1.00
45	22915151	FEED ARM COMPL.				1.00
46	SS6121210SP	SCREW 3/16-28 L=12		*		1.00
47	SD1000801SH	HINGE SCREW D=10 H=8				1.00
48	22915201	FEED DRIVING SHAFT				1.00
49	22904155	MAIN SHAFT THRUST COLLAR ASM.				1.00
50	SS8660610TP	SCREW 1/4-40 L=6		*		2.00

51	22913008	FEED ROCKER SHAFT BUSHING				2.00
52	22940654	FEED ROCKER ASM.				1.00
53	SS7121410TP	SCREW 3/16-28 L=14		*		1.00
54	WP0480856SP	WASHER 4.8X8.4X0.8		*		1.00
55	SS7110740TP	SCREW 11/64-40 L=7				1.00
56	RC0150001KP	RETAINING RING 13.8				1.00
57	22915359	DRIVING SHAFT CRANK ASM.				1.00
58	SS7111120SP	SCREW 11/64-40 L=10.5		*		1.00
59	22910905	WALKING FOOT PIN A				2.00
60	40089548	CONNECTING LINK B				2.00
61	22904155	MAIN SHAFT THRUST COLLAR ASM.				1.00
62	SS8660610TP	SCREW 1/4-40 L=6		*		2.00
63	RO078190100	RUBBER RING				1.00
64	40100084	FEED LEVER SHAFT				1.00
65	22912802	FEED LEVER SHAFT BUSHING				1.00
66	40093417	CONNECTING LINK A				2.00
67	SS6121860SP	SCREW 3/16-28 L=18				1.00

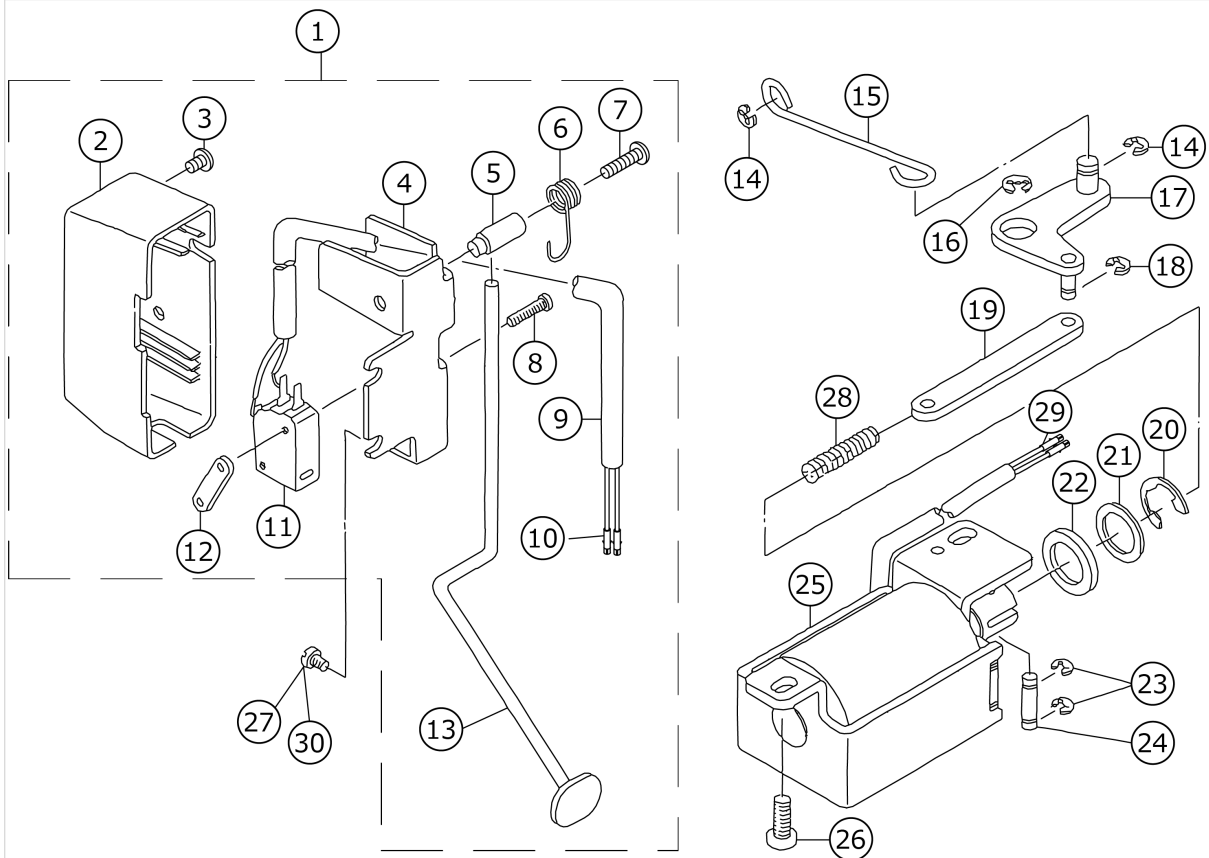
# THREAD TRIMMER COMPONENTS



No.	品番	品名	備考	子部品	消耗品	個数
1	11040359	KNIFE UNIT				1.00
2	SD0460703TP	HINGE SCREW D=4.6 H=7		*		1.00
3	11040508	FORKED BASE FOR KNIFE		*		1.00
4	11040409	MOVING KNIFE HINGE SCREW		*		1.00
5	11040052	MOVING KNIFE ASM.		*		1.00
6	22947907	KNIFE MOUNTING BASE		*		1.00
7	11313103	THREAD GUIDE FOR KNIFE		*		1.00
8	SS2060210SP	SCREW 3/32-56 L=2.3		*		1.00
9	SS4080620TP	SCREW 1/8-44 L=6		*		2.00
10	D2406555D0H	COUNTER KNIFE		*		1.00
11	HK03464000B	PIN CONTACT				2.00
12	SS4110715SP	SCREW 11/64-40 L=7				1.00
13	11042553	PICKER ARM ASM.				1.00
14	11042504	PICKER ARM		*		1.00
15	22950356	HOOK THREAD PRESSER ASM.		*		1.00
16	SS6090510SP	SCREW 9/64-40 L=5		*		2.00
17	SD0641451SP	HINGE SCREW D=6.35 H=14.5				1.00
18	SD0630275SP	HINGE SCREW D=6.35 H=2.7				1.00
19	11042850	THREAD TRIMMER CAM ASM.				1.00
20	SS6660610TP	SCREW 1/4-40 L=6		*		2.00
21	22950950	CAM COLLAR ASM.				1.00
22	SS8110520TP	SCREW 11/64-40 L=4.5		*		1.00
23	22949762	THREAD TRIMMER DRIVING UNIT				1.00
24	22949754	BASE PLATE ASM.		*		1.00
25	22950703	DRIVING ARM STOPPER		*		1.00
26	22950000	PICKER LINK PIN		*		1.00
27	RE0600000K0	E-RING 6		*		1.00
28	SS4110715SP	SCREW 11/64-40 L=7		*		2.00
29	22949408	CLUTCH SPRING		*		1.00
30	11041852	CLUTCH PLATE ASM.		*		1.00
31	22950109	PICKER LINK		*		1.00
32	WP0621016SH	WASHER		*		2.00
33	NS6150430SP	NUT 15/64-28		*		2.00
34	RE0600000K0	E-RING 6		*		1.00
35	22948301	MOVING KNIFE LINK		*		1.00
36	RE0500000K0	E-RING		*		1.00
37	22948400	MOVING KNIFE LINK PIN		*		1.00
38	11043700	KNIFE RETURN SPRING B		*		1.00
39	RE0400000K0	E-RING 4		*		2.00
40	22949101	ROLLER FULCRUM SHAFT		*		1.00
41	22949200	ROLLER RETURN SPRING		*		1.00
42	SS7090610SP	SCREW 9/64-40 L=6		*		1.00
43	22949002	ROLLER ARM SEAT		*		1.00
44	11040953	ROLLER ARM ASM.		*		1.00
45	11040854	KNIFE DRIVING ARM ASM.		*		1.00
46	HK034610140	HOUSING 14P				1.00
47	SS4150915SP	SCREW 15/64-28 L=9				2.00
48	SD0640631TP	HINGE SCREW D=6.35 H=6.3				1.00
49	22951164	SOLENOID UNIT				1.00
50	22949903	CLUTCH LINK		*		1.00

51	RE0500000KO	E-RING		*		1.00
52	SS6110710TP	SCREW 11/64-40 L=6.5		*		1.00
53	11043908	THREAD TRIMMER SOLENOID		*		1.00
54	22951404	SOLENOID BASE		*		1.00
55	WP0450000SD	WASHER 4.5X8X0.5		*		2.00
56	NM6040000SN	NUT M4		*		2.00
57	11043304	SOLENOID RUBBER		*		1.00
58	NS6660410SH	NUT		*		1.00
59	NS6660430SP	NUT 1/4-40		*		1.00
60	22951008	SOLENOID PIN		*		1.00
61	22951552	GROUND WIRE ASM.				1.00
62	SD0600361SP	HINGE SCREW D=6 H=3.6				1.00
63	SS4151215SP	SCREW 15/64-28 L=12				2.00
64	22924807	PIPE HOLDER LOWER				1.00

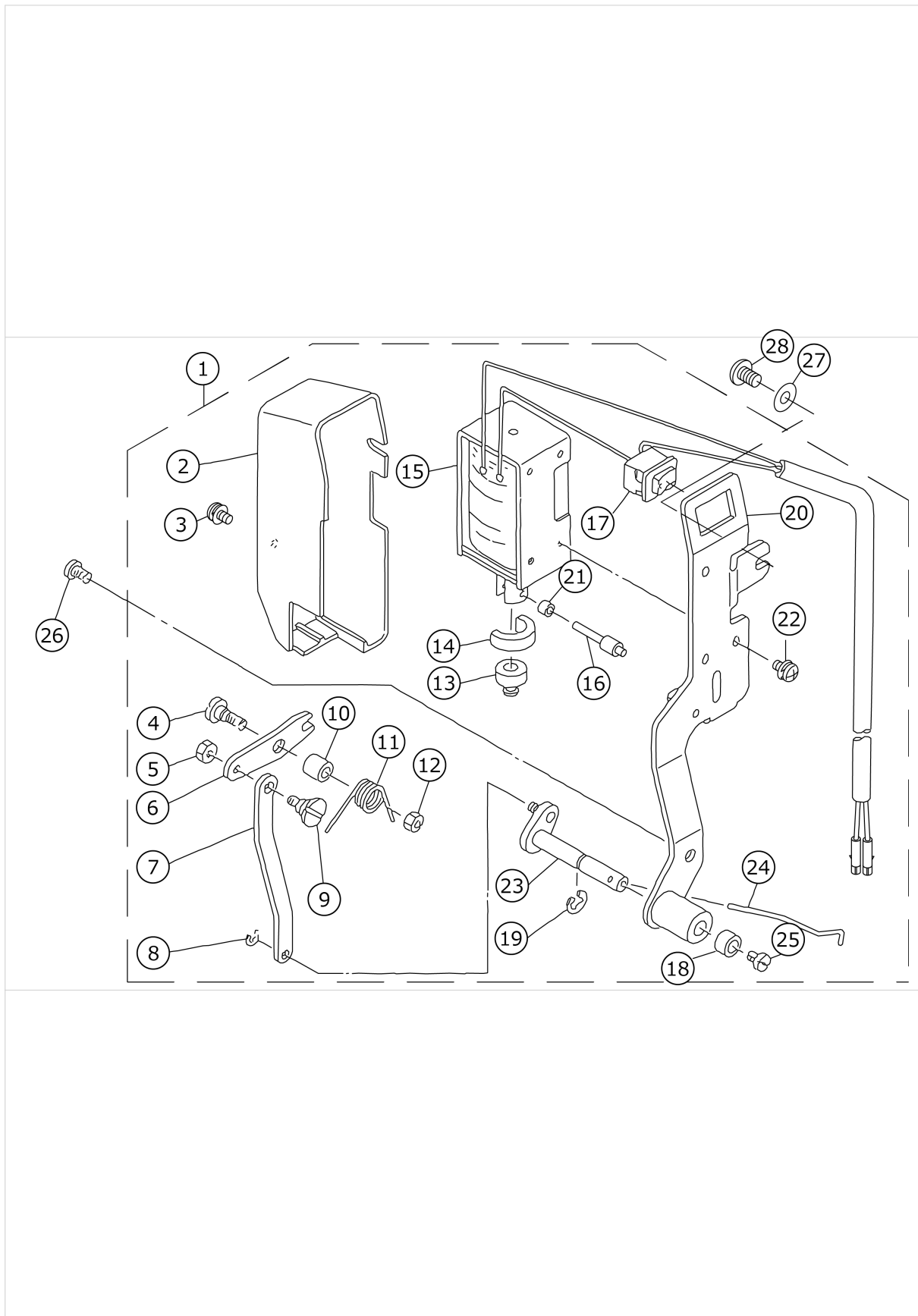
# AUTOMATIC REVERSE FEED COMPONENTS





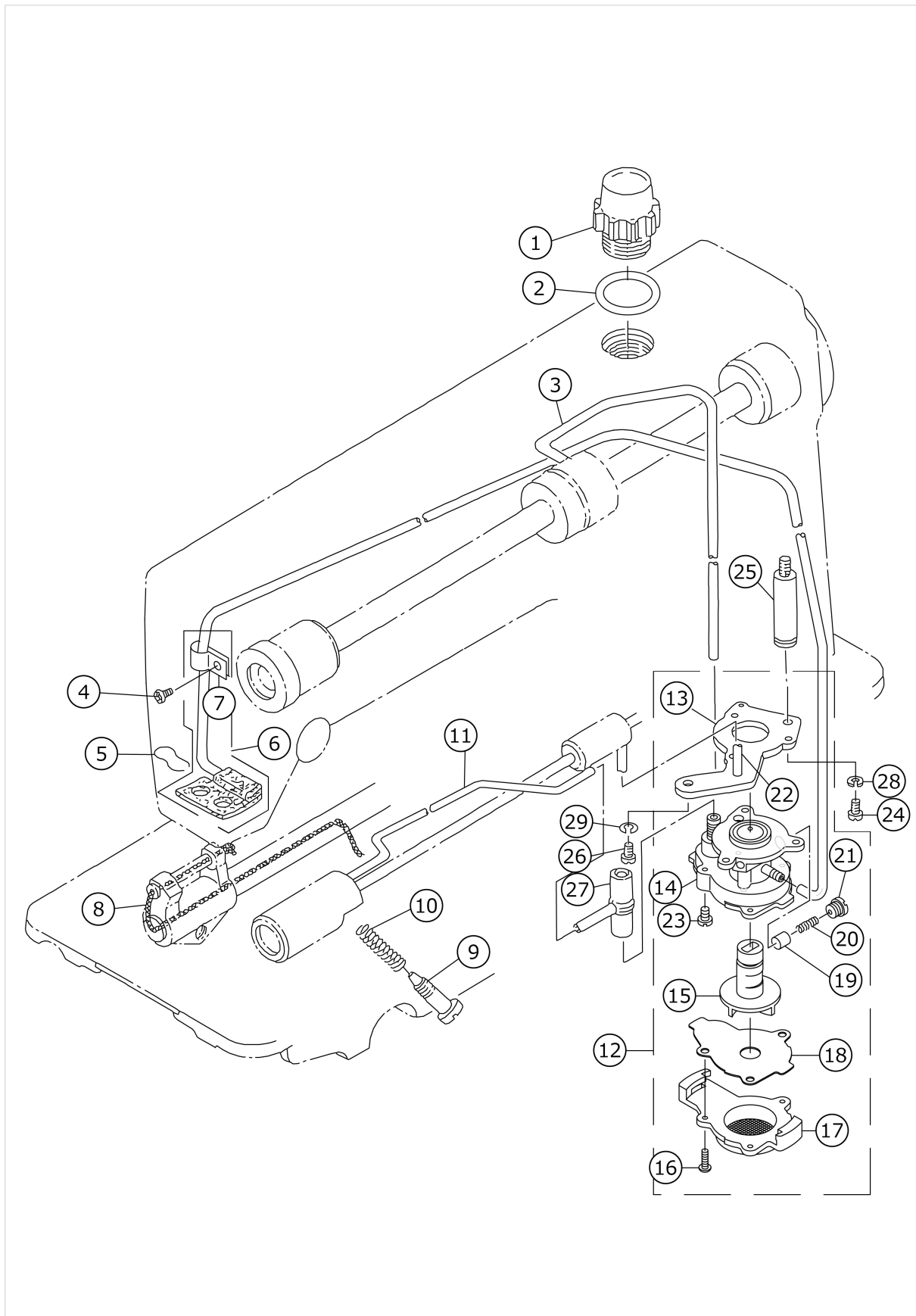
No.	品番	品名	備考	子部品	消耗品	個数
1	11075058	REVERSE FEED SWITCH ASM.				1.00
2	22954606	REVERSE FEED SWITCH COVER		*		1.00
3	SM4040655SP	SCREW M4 L=6		*		1.00
4	22954101	REVERSE FEED SWITCH BASE		*		1.00
5	22954200	REVERSE FEED SWITCH SHAFT		*		1.00
6	22954309	REVERSE FEED SWITCH SPRING		*		1.00
7	SM4041655SP	SCREW M4 L=16		*		1.00
8	SM4031501SC	SCREW M3 L=15		*		2.00
9	HW500070000	2-CORE CABTYRE CORD		*		1.31
10	HK03464000B	PIN CONTACT		*		2.00
11	HA001900000	MICROSWITCH		*		1.00
12	11102308	MICRO SWITCH PLATE		*		1.00
13	22954507	REVERSE FEED SWITCH LEVER		*		1.00
14	RE0500000KP	E-RING 5				2.00
15	11101300	REVERSE FEED CONNECTING SHAFT				1.00
16	RE0900000K0	E-RING 9				1.00
17	22953657	AUTO-BACK ARM ASM.				1.00
18	RE0400000KP	E-RING 4				1.00
19	22953905	CONNECTING LINK				1.00
20	RE1200000K0	E-RING 12				1.00
21	WP1602616SZ	WASHER 16X24X2.6				1.00
22	D2468555B00	RUBBER PLUNGER				1.00
23	RE0400000K0	E-RING 4				2.00
24	22953509	REVERSE FEED PLUNGER ARM PIN				1.00
25	40085585	REVERSE FEED SOLENOID ASM.				1.00
26	SS4151215SP	SCREW 15/64-28 L=12				2.00
27	SS4120915SP	SCREW 3/16-28 L=9				1.00
28	11217601	WALKING FOOT SPRING				1.00
29	HK03464000B	PIN CONTACT				2.00
30	SS4120615SP	SCREW 3/16-28 L=6	FOR DDL-5571N			1.00

# WIPER COMPONENTS



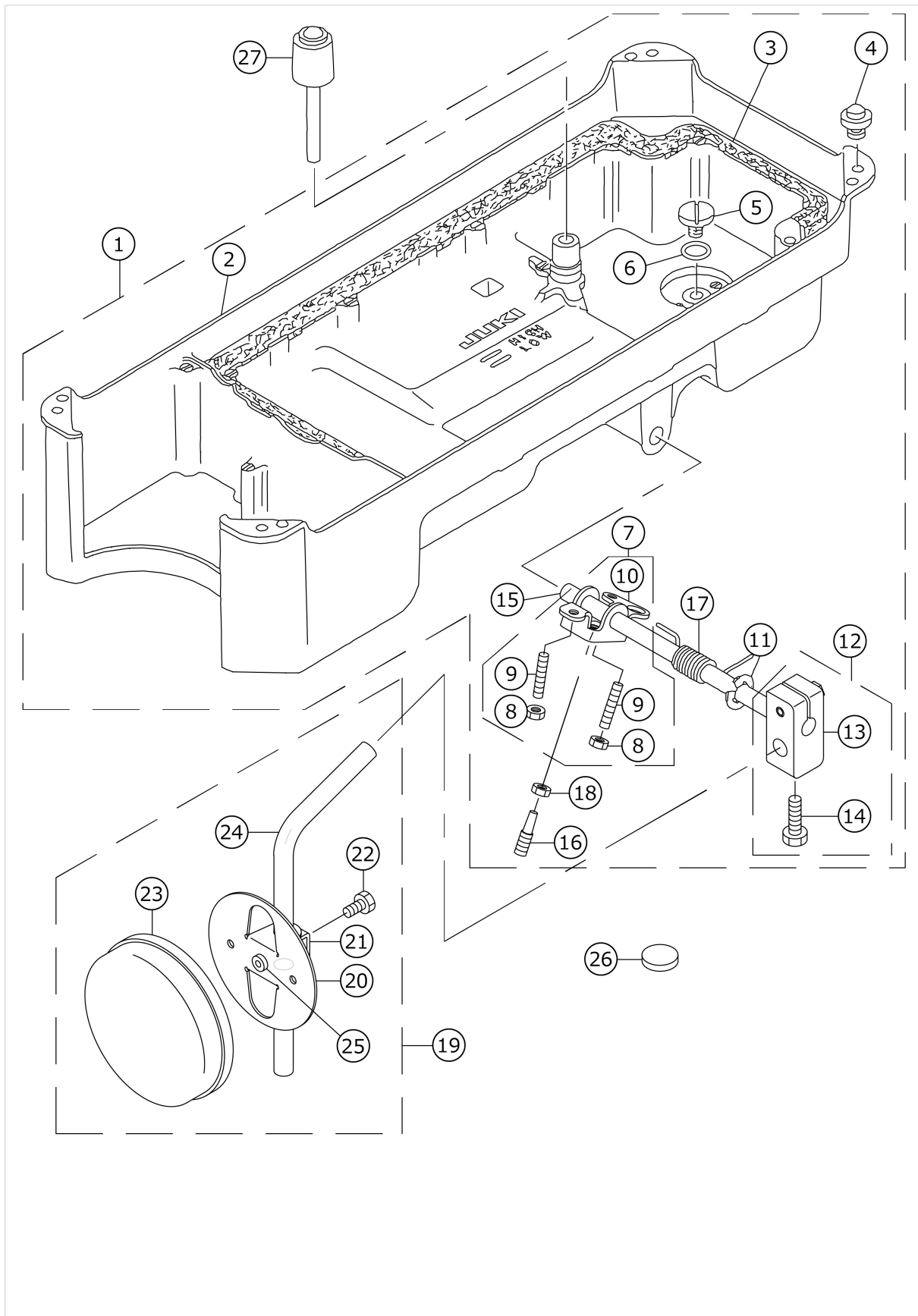
No.	品番	品名	備考	子部品	消耗品	個数
1	22955553	WIPER ASM.				1.00
2	22955504	WIPER COVER		*		1.00
3	SL4030631SC	SCREW M3X6		*		1.00
4	SD0650321TP	HINGE SCREW D=6.5 H=3.2		*		1.00
5	NS6090310SP	NUT 9/64-40		*		1.00
6	22956106	WIPER LINK A		*		1.00
7	22956403	WIPER LINK B		*		1.00
8	RE0250000K0	E-RING 2.5		*		1.00
9	22956908	WIPER LINK B HINGE SCREW		*		1.00
10	22956205	WIPER HINGE SCREW COLLAR		*		1.00
11	22956304	WIPER SPRING		*		1.00
12	NS6110310SP	NUT 11/64-40		*		1.00
13	22955900	WIPER RUBBER A		*		1.00
14	22956007	WIPER RUBBER B		*		1.00
15	11110301	WIPER SOLENOID		*		1.00
16	40106936	WIPER SOLENOID ASM.		*		1.00
17	HA00600000A	SWITCH		*		1.00
18	22956809	WIPER COLLAR		*		1.00
19	RE0500000K0	E-RING		*		1.00
20	11110152	WIPER BASE ASM.		*		1.00
21	22957203	WIPER LINK COLLAR		*		1.00
22	SL4030641SE	SCREW		*		3.00
23	11111051	WIPER DRIVING SHAFT ASM.		*		1.00
24	22957005	WIPER		*		1.00
25	SS6090540SP	SCREW 9/64-40 L=5.0		*		1.00
26	SS4120915SP	SCREW 3/16-28 L=9				2.00
27	WP0482086SD	WASHER 4.8X11.5X2				1.00
28	SS4120915SP	SCREW 3/16-28 L=9				1.00

# OIL LUBRICATION COMPONENTS



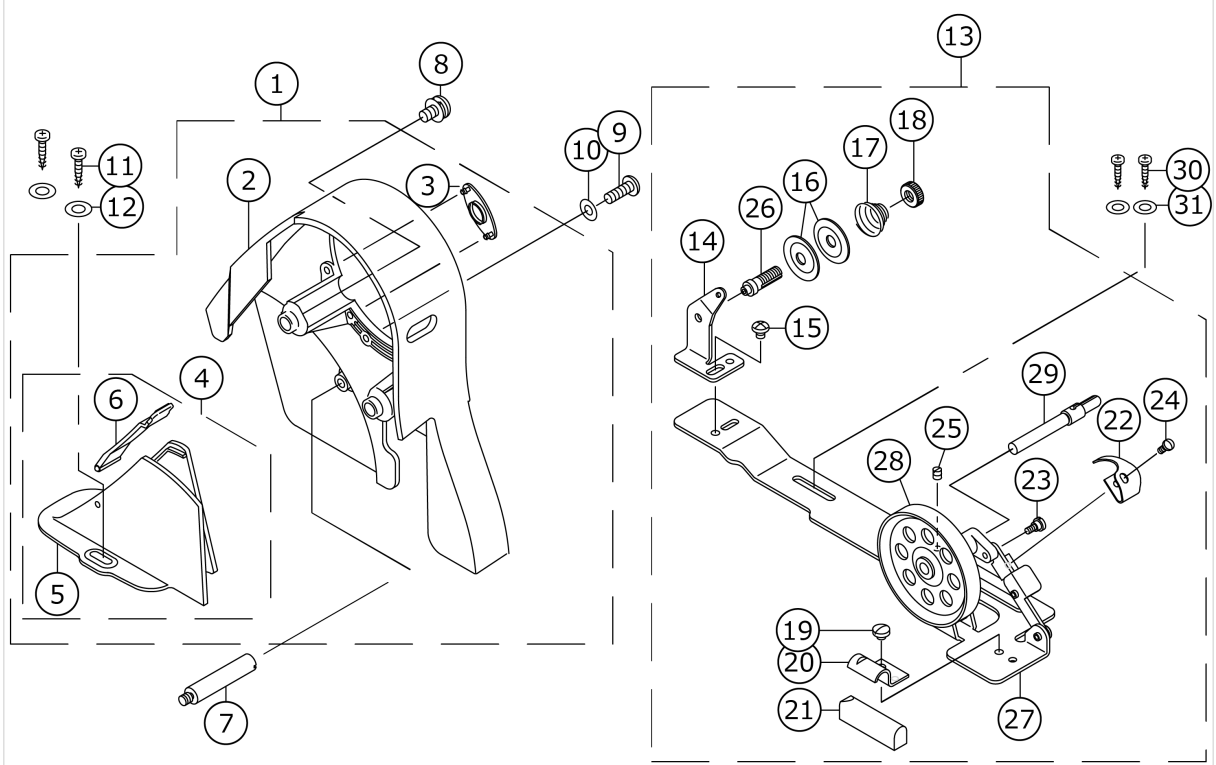
No.	品番	品名	備考	子部品	消耗品	個数
1	22947006	OIL SIGHT WINDOW				1.00
2	RO195240100	RUBBER RING				1.00
3	22924401	MAIN SHAFT OIL TUBE				1.00
4	SS4120615SP	SCREW 3/16-28 L=6				1.00
5	22925101	OIL FELT PRESSER				1.00
6	22924153	RETURN PIPE ASM.				1.00
7	22924302	RETURN PIPE HOLDER		*		1.00
8	CQ252000000	OIL WICK				0.20
9	22925002	OIL REGULATOR SCREW				1.00
10	22924906	OIL REGULATOR SCREW SPRING				1.00
11	22924500	HOOK OIL TUBE				1.00
12	22923056	OIL PUMP ASM.				1.00
13	22923312	OIL PUMP INSTALLING BASE		*		1.00
14	22923015	OIL PUMP		*		1.00
15	22923700	IMPELLER		*		1.00
16	SE4301041SR	SCREW D=3 L=10		*		3.00
17	22923205	PUMP BODY COVER		*		1.00
18	22923809	PUMP BODY SUPPORT PLATE		*		1.00
19	22923403	PLUNGER		*		1.00
20	22923601	PLUNGER SPRING		*		1.00
21	22923502	PLUNGER SCREW		*		1.00
22	22923908	HOOK DRIVING SHAFT OILING PIPE		*		1.00
23	SL4030851SF	SCREW M3 L=8		*		3.00
24	SS6111010TP	SCREW 11/64-40 L=9.5				1.00
25	22947105	PUMP BODY STRUT				1.00
26	SS4151215SP	SCREW 15/64-28 L=12				1.00
27	22924609	RUBBER JOINT				1.00
28	WS0451040KP	SPRING WASHER 4.5X8.5X1				1.00
29	WS0651310KP	SPRING WASHER 6.5X11X1.3				1.00

# OIL RESERVOIR COMPONENTS



No.	品番	品名	備考	子部品	消耗品	個数
1	11047057	OIL RESERVOIR ASM.				1.00
2	11023017	OIL RESERVOIR		*		1.00
3	11024700	GASKET		*		1.00
4	11047107	RUBBER CUSHION		*		1.00
5	SS6700710SH	SCREW 5/16-24 L=7		*		1.00
6	RO098240100	RUBBER RING		*		1.00
7	22932156	KNEE LIFTER ROTATION ARM ASM.		*		1.00
8	NM6060001SE	NUT M6		*		2.00
9	SM8063012TR	SCREW M6 L=30		*		2.00
10	22932107	KNEE LIFTING ROTATING ARM		*		1.00
11	RE1000000K0	E-RING 10		*		1.00
12	22932453	BRACKET ASM.		*		1.00
13	22932404	BRACKET		*		1.00
14	SM9062053SR	SCREW M6 L=20		*		2.00
15	22932305	KNEE PRESS CROSS SHAFT		*		1.00
16	40101720	SCREW_M6		*		1.00
17	22932206	SPRING		*		1.00
18	NM6060001SE	NUT M6		*		1.00
19	22934251	KNEE PAD PLATE ASM.				1.00
20	22934202	KNEE PAD PLATE		*		1.00
21	22934301	KNEE PAD PLATE SUPPORT		*		1.00
22	SM9061203SE	SCREW M6 L=12		*		1.00
23	22934509	KNEE PAD PLATE COVER		*		1.00
24	22934608	KNEE PAD UPRIGHT SHAFT		*		1.00
25	22934400	KNEE PAD PLATE RUBBER		*		1.00
26	B8228125000	OIL RESERVOIR MAGNET				1.00
27	11024304	KNEE PRESS LIFTER ROD				1.00

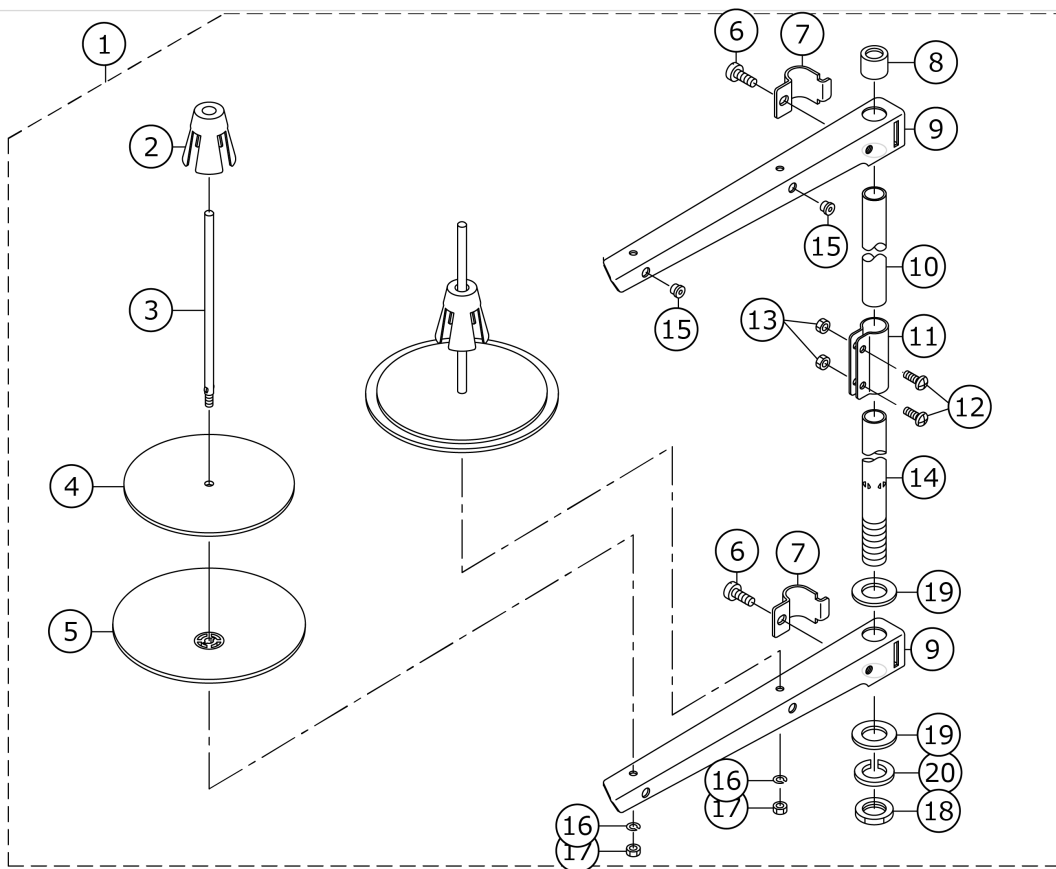
# BELT COVER & BOBBIN WINDER COMPONENTS





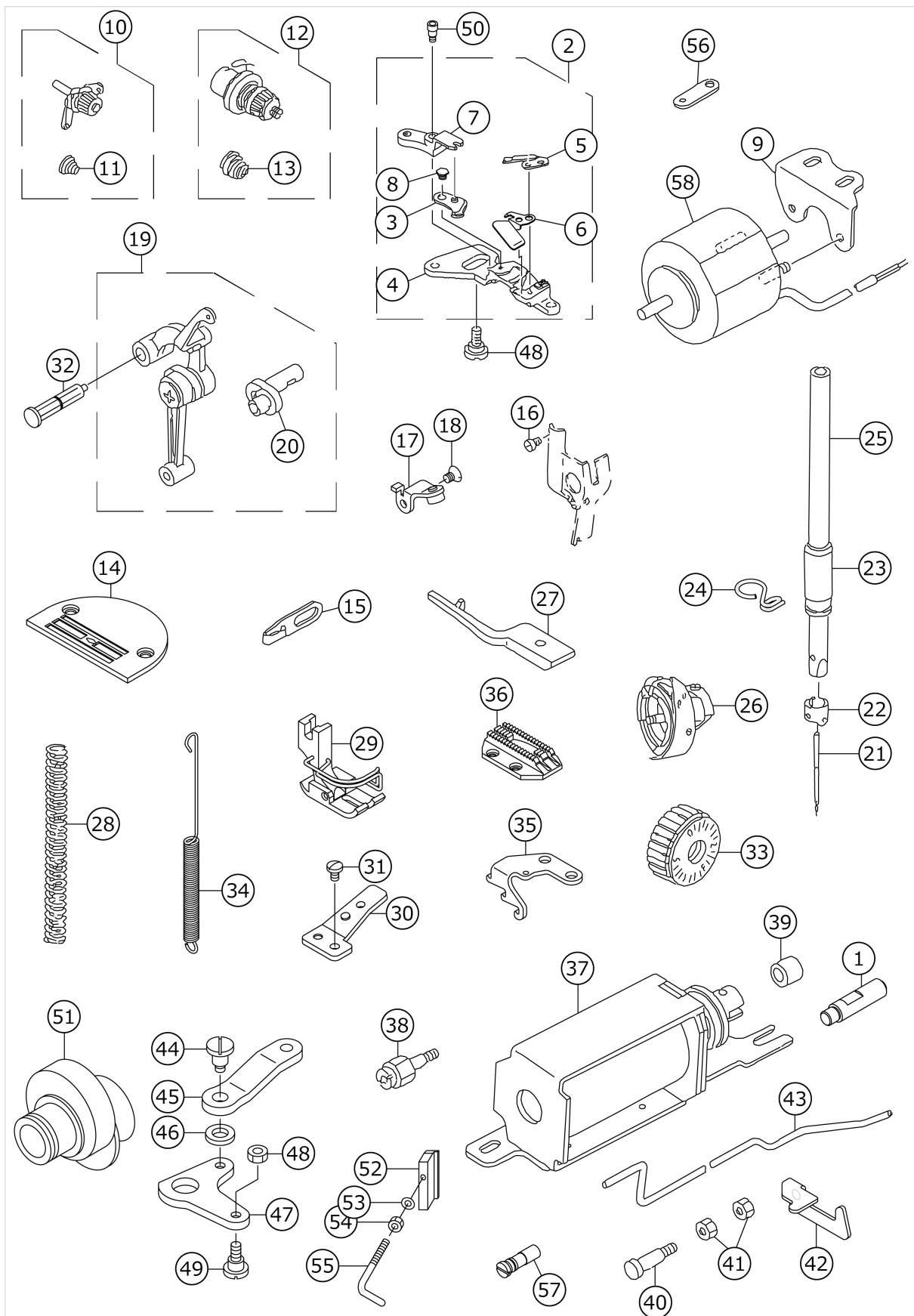
No.	品番	品名	備考	子部品	消耗品	個数
1	11076668	BELT COVER ASM. URBANE GRAY				1.00
2	11076601	BELT COVER A		*		1.00
3	11076700	BELT COVER A CAP		*		1.00
4	11076858	BELT COVER B ASM.		*		1.00
5	11076809	BELT COVER B		*		1.00
6	11076957	BELT COVER B CAP ASM.		*		1.00
7	11023504	BELT COVER SUPPORT A				1.00
8	11025202	BELT COVER A SCREW				2.00
9	SS4121415SP	SCREW 3/16-28 L=14				1.00
10	WP0501016SD	WASHER 5X10.5X1				1.00
11	SK3412000SC	WOOD SCREW D=4.1 L=20				2.00
12	WP0450826SC	WASHER 4.5X10X0.8				2.00
13	22927354	BOBBIN WINDER COMPL.				1.00
14	22928501	THREAD TENSION POST BASE		*		1.00
15	SS4110515SP	SCREW 11/64-40 L=5		*		1.00
16	22928907	THREAD TENSION DISK		*		2.00
17	22929004	THREAD TENSION SPRING		*		1.00
18	22928808	NUT		*		1.00
19	SS7110350SP	SCREW 11/64-40 L=3.5		*		1.00
20	22928402	CONTROL RUBBER HOLDING PLATE		*		1.00
21	22928303	CONTROL RUBBER		*		1.00
22	22928105	BOBBIN PRESSER		*		1.00
23	SD0490261SP	HINGE SCREW D=4.9 H=2.6		*		1.00
24	SS7081310SP	SCREW 1/8-44 L=12.5		*		1.00
25	SS8110510SP	SCREW 11/64-40 L=5		*		1.00
26	22928709	THREAD TENSION POST		*		1.00
27	22927305	BOBBIN WINDER BASE		*		1.00
28	22927404	BOBBIN WINDER		*		1.00
29	22927602	BOBBIN WINDER SPINDLE		*		1.00
30	SK3412000SC	WOOD SCREW D=4.1 L=20				2.00
31	WP0450826SC	WASHER 4.5X10X0.8				2.00

# THREAD STAND COMPONENTS



No.	品番	品名	備考	子部品	消耗品	個数
1	22930358	THREAD STAND ASM.				1.00
2	22931109	SPOOL RETAINER		*		2.00
3	22931000	SPOOL PIN		*		2.00
4	22930903	SPOOL REST CUSHION		*		2.00
5	22930804	SPOOL REST		*		2.00
6	SM6061610SC	SCREW M6 L=15		*		2.00
7	22930705	THREAD GUIDE ARM JOINT		*		2.00
8	22931406	SPOOL REST ROD RUBBER CAP		*		1.00
9	22930507	SPOOL REST ARM		*		2.00
10	22930408	SPOOL REST ROD UPPER		*		1.00
11	22931307	SPOOL REST ROD JOINT		*		1.00
12	SM4051405SE	SCREW M5 L=14		*		2.00
13	NM6050001SE	NUT M5		*		2.00
14	22930309	SPOOL REST ROD LOWER		*		1.00
15	22931208	THREAD GUIDE		*		2.00
16	WS0510002KN	SPRING WASHER		*		2.00
17	NM6050001SE	NUT M5		*		2.00
18	NM6160511SE	NUT M16X1.5		*		1.00
19	WP1612616SE	WASHER 16X30X2.6		*		2.00
20	WS1643202KR	SPRING WASHER		*		1.00

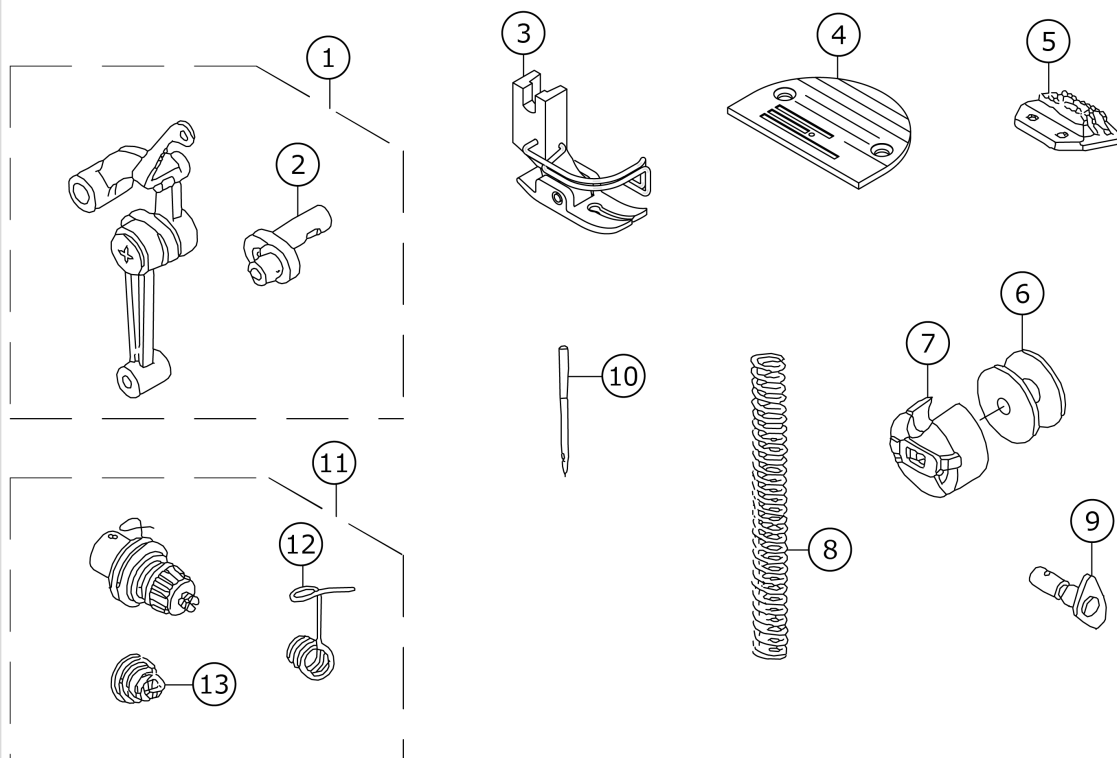
# EXCLUSIVE PARTS FOR DDL-5571N-H



No.	品番	品名	備考	子部品	消耗品	個数
1	40010395	ADJUSTING LINK FULCRUM SHAFT B				1.00
2	11095551	KNIFE UNIT				1.00
3	11409257	MOVING KNIFE J ASM.		*		1.00
4	11095502	KNIFE MOUNT BASE		*		1.00
5	11409604	FIX KNIFE		*		1.00
6	11095403	KNIFE THREAD GUIDE		*		1.00
7	11095601	KNIFE BRANCH		*		1.00
8	SD0500131TP	HINGE SCREW D=5 H=1.25		*		1.00
9	11094901	SOLENOID BASE				1.00
10	22963458	THREAD TENSION ASM.				1.00
11	22963409	THREAD TENSION SPRING		*		1.00
12	22962054	THREAD TENSION ASM.				1.00
13	22962005	THREAD TENSION SPRING		*		1.00
14	11400801	THROAT PLATE J				1.00
15	11091006	ARM THREAD GUIDE (HA)				1.00
16	SS6080320SP	SCREW 1/8-44 L=2.5				1.00
17	11095254	LEVER STOPPER ASM.				1.00
18	SS1120710SP	SCREW 3/16-28 L=6.5				1.00
19	40103560	LINK_THREAD_TAKE-UP_LENER-H_ASM.				1.00
20	40109126	NEEDLE_BAR_CRANK_H		*		1.00
21	MDB100B2100	NEEDLE DBX1 #21				1.00
22	B1418415H00	NEEDLE BAR THREAD GUIDE				1.00
23	B1403553000	NEEDLE BAR BUSHING LOWER				1.00
24	40023223	NEEDLE BAR THREAD GUIDE				1.00
25	22970206	NEEDLE BAR				1.00
26	11092251	LUBRICATING HOOK ASM.				1.00
27	22962401	POSITIONING FINGER H				1.00
28	B1505552000A	PRESSER SPRING				1.00
29	D1524555EBL	PRESSER FOOT ASM.				1.00
30	22962807	WIRE PRESSER PLATE B				1.00
31	SS7110740TP	SCREW 11/64-40 L=7				1.00
32	22919559	THREAD TAKE-UP CRANK SHAFT ASM.				1.00
33	11071909	FEED DIAL				1.00
34	40080725	ADJUSTING LINK SPRING				1.00
35	22970602	FEED SPRING HOOK				1.00
36	11403003	FEED J				1.00
37	40090750	SOLENOID MOUNTING BASE ASM.				1.00
38	11231503	OIL PUMP SUPPORT				1.00
39	22962609	REVERSE FEED BASE COLLAR				1.00
40	22962906	PLUNGER ARM PIN				1.00
41	NS6110420SP	NUT 11/64-40				1.00
42	22962708	TUBE HOLDER LOWER				1.00
43	11094109	OIL TUBE				1.00
44	SD0700711TP	HINGE SCREW D=7 H=7.1				1.00
45	22962500	REVERSE FEED CONNECTING LINK H				1.00
46	WP0722316SH	WASHER				1.00
47	11101508	REVERSE FEED LINK				1.00
48	NS6110420SP	NUT 11/64-40				2.00
49	SD0700451TP	HINGE SCREW D=7 H=4.5				1.00
50	SD0460703TP	HINGE SCREW D=4.6 H=7				1.00

51	22962351	FEED DRIVE ECCENTRIC CAM ASM.				1.00
52	11403805	THREAD GUIDE C FITTING PLATE				1.00
53	WP0371016SD	WASHER 3.7X8X1				1.00
54	NS6090310SP	NUT 9/64-40				1.00
55	22972608	ARM THREAD GUIDE C				1.00
56	11094604	CLUTCH LINK				1.00
57	B1213552000A	OIL ADJUSTING PIN				1.00
58	11096500	THREAD TRIMMER SOLENOID				1.00
59	SD0550701TP	STEP-SCREW D=5.5 H=7				1.00

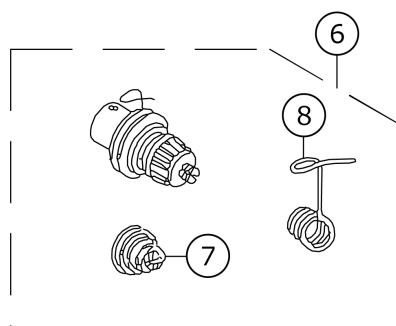
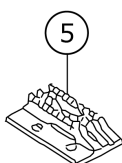
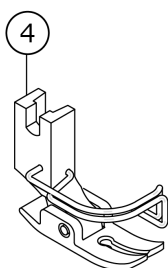
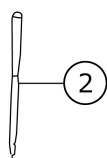
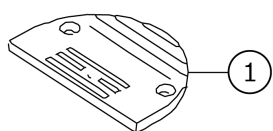
# EXCLUSIVE PARTS FOR DDL-5571N-A, 5581N-A



No.	品番	品名	備考	子部品	消耗品	個数
1	11091857	LINK THREAD TAKE-UP LEVER ASM.				1.00
2	11091808	NEEDLE BAR CRANK A		*		1.00
3	D1524555DBA	PRESSER FOOT ASM.				1.00
4	11028008	THROAT PLATE				1.00
5	B1613012I00	FEED DOG I				1.00
6	22964001	BOBBIN A				1.00
7	B18370120A0	BOBBIN CASE ASM.				1.00
8	B1505227T00A	PRESSER SPRING T				1.00
9	11092558	HAND LIFTER CAM ASM.				1.00
10	MDA100B1100	NEEDLE DAX1 #11				1.00
11	40011503	THREAD TENSION ASM.				1.00
12	40054784	THREAD TAKE-UP SPRING		*		1.00
13	40054785	THREAD TENSION SPRING		*		1.00

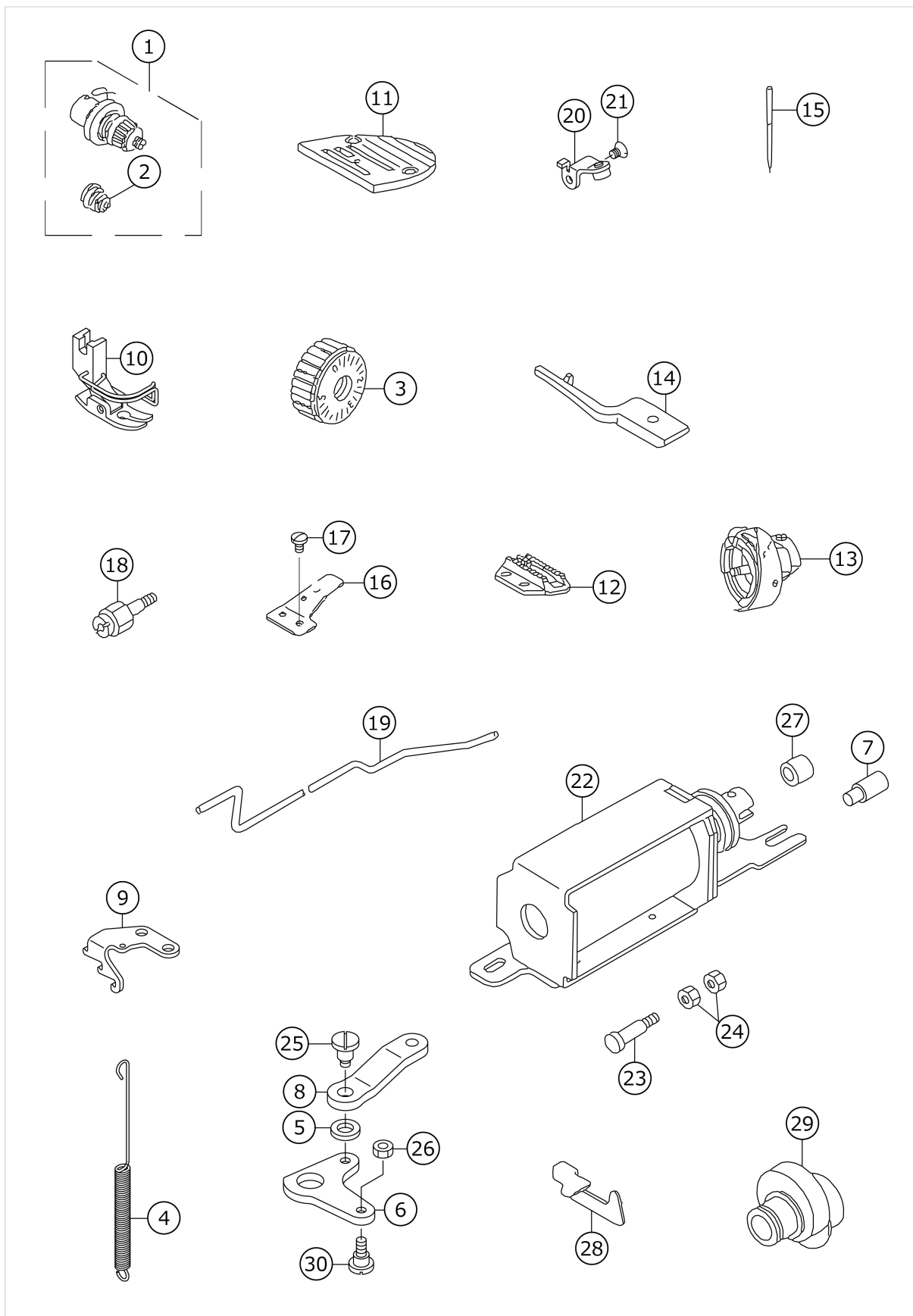


# EXCLUSIVE PARTS FOR DDL-5571N-K, 5581N-K



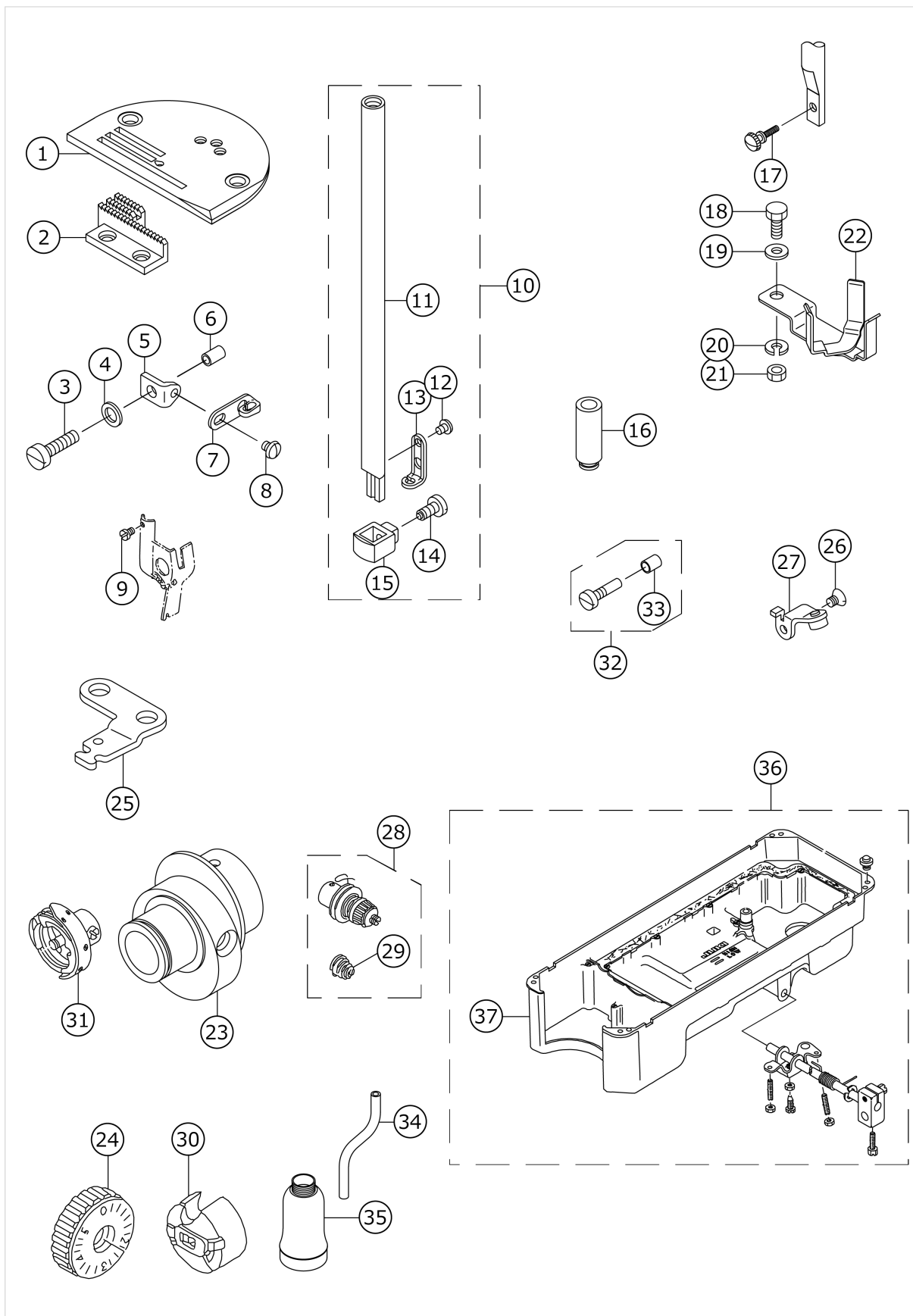
No.	品番	品名	備考	子部品	消耗品	個数
1	11001906	THROAT PLATE K				1.00
2	MDB100B0900	NEEDLE DBX1 #9				1.00
3	11092558	HAND LIFTER CAM ASM.				1.00
4	D1524555DBA	PRESSER FOOT ASM.				1.00
5	D1613155W00	FEED DOG W				1.00
6	40011503	THREAD TENSION ASM.				1.00
7	40054785	THREAD TENSION SPRING		*		1.00
8	40054784	THREAD TAKE-UP SPRING		*		1.00

# EXCLUSIVE PARTS FOR DDL-5571N-M, 5581N-M



No.	品番	品名	備考	子部品	消耗品	個数
1	22962054	THREAD TENSION ASM.				1.00
2	22962005	THREAD TENSION SPRING		*		1.00
3	11071909	FEED DIAL				1.00
4	40080725	ADJUSTING LINK SPRING				1.00
5	WP0722316SH	WASHER				1.00
6	11101508	REVERSE FEED LINK				1.00
7	40010395	ADJUSTING LINK FULCRUM SHAFT B				1.00
8	22962500	REVERSE FEED CONNECTING LINK H				1.00
9	22970602	FEED SPRING HOOK				1.00
10	11080371	PRESSER ASM.				1.00
11	11080009	THROAT PLATE				1.00
12	11080603	FEED				1.00
13	11092251	LUBRICATING HOOK ASM.				1.00
14	22962401	POSITIONING FINGER H				1.00
15	MDB100B1600	NEEDLE DBX1 #16				1.00
16	22962807	WIRE PRESSER PLATE B				1.00
17	SS7110740TP	SCREW 11/64-40 L=7				1.00
18	11231503	OIL PUMP SUPPORT				1.00
19	11094109	OIL TUBE				1.00
20	11095254	LEVER STOPPER ASM.				1.00
21	SS1120710SP	SCREW 3/16-28 L=6.5				1.00
22	40090750	SOLENOID MOUNTING BASE ASM.				1.00
23	22962906	PLUNGER ARM PIN				1.00
24	NS6110420SP	NUT 11/64-40				1.00
25	SD0700711TP	HINGE SCREW D=7 H=7.1				1.00
26	NS6110420SP	NUT 11/64-40				1.00
27	22962609	REVERSE FEE BASE COLLAR				1.00
28	22962708	TUBE HOLDER LOWER				1.00
29	22962351	FEED DRIVE ECCENTRIC CAM ASM.				1.00
30	SD0700451TP	HINGE SCREW D=7 H=4.5				1.00

# EXCLUSIVE PARTS FOR DDL-5571NU



No.	品番	品名	備考	子部品	消耗品	個数
1	B1109505U00	THROAT PLATE				1.00
2	B1613505U00	FEED DOG				1.00
3	SS6121850TP	SCREW 3/16-28 L=18				1.00
4	WP0480856SP	WASHER 4.8X8.4X0.8				1.00
5	B1128505U00	THREAD GUIDE MOUNTING BASE				1.00
6	11142205	SPACER				1.00
7	D1127555D00	FRAME THREAD GUIDE B				1.00
8	SS5090420SP	SCREW 9/64-40 L=3.5				1.00
9	SS6080320SP	SCREW 1/8-44 L=2.5				1.00
10	B1401505UA0A	NEEDLE BAR ASM.				1.00
11	B1401505U00A	NEEDLE BAR		*		1.00
12	SS5060310SP	SCREW 3/32-56 L=2.8		*		1.00
13	B1419505U00	THREAD GUIDE		*		1.00
14	B1421505U00	NEEDLE CLAMP SCREW		*		1.00
15	B1420505U00	NEEDLE CLAMP		*		1.00
16	B1403553000	NEEDLE BAR BUSHING LOWER				1.00
17	11142403	PRESSER SCREW				1.00
18	SM9082023SE	SCREW M8 L=20				1.00
19	WP0871602SE	WASHER 8.7X18X1.6				1.00
20	WS0861410KR	SPRING WASHER 8.6X15X1.4				1.00
21	NM6080721SE	NUT M8				1.00
22	11074408	SUPPORT BASE				1.00
23	11142304	FEED ECCENTRIC CAM				1.00
24	11071909	FEED DIAL				1.00
25	11074309	FEED SPRING HOOK				1.00
26	SS1120710SP	SCREW 3/16-28 L=6.5				1.00
27	11095254	LEVER STOPPER ASM.				1.00
28	22962054	THREAD TENSION ASM.				1.00
29	22962005	THREAD TENSION SPRING		*		1.00
30	B18370120A0	BOBBIN CASE ASM.				1.00
31	D1830555BAG	HOOK ASM. FOR HEAVY				1.00
32	B1808227HA0	HOOK DRIVING SHAFT FRONT SCREW				1.00
33	B1810227H00	OIL WICK		*		1.00
34	BP900000000	VINYL TUBE D=9				0.60
35	B9121012000	OIL CAN				1.00
36	11142064	OIL RESERVOIR ASM.				1.00
37	11142056	OIL RESERVOIR ASM.		*		1.00

# LIST FOR INFORMATION OF CHANGE (1)

As to the place changed, refer to the corresponding Rev.No.  
 When previous parts(Obsoleted part)and new parts(Added parts)are  
 not interchangeable with each other:  
 In this case, even obsoleted parts(D.)can be ordered with the  
 obsoleted part number, so select the parts with changed dates and  
 place your orders.

変更箇所は、該当Rev.No.版をご参照ください。

部品の互換性がない変更の場合は、削除された品番でも、ご注文できます。

29121704  
 No.0915-08・・・Rev.No.

\*A:Added parts追加部品/D:Obsoleted parts削除部品/E:Erratum訂正

* Rev. No.	Page 頁	Ref. No.	Parts No. 品番	* Rev. No.	Page 頁	Ref. No.	Parts No. 品番
D 07	2	18	111-00500	A 08	2	18	229-52501
D 07	2	20	111-00104	A 08	2	20	401-11022
D 07	2	58	M6012-350-AAL				
D 07	2	59	SS-4121215-SP				
D 07	2	60	WP-0501016-SD				
D 07	4	4	110-39070	A 08	4	4	229-18072
D 07	4	5	110-39062	A 08	4	5	229-18064
D 07	4	6	B1905-541-B00	A 08	4	6	229-18403
				A 08	4	7	229-18502
				A 08	4	8	229-18601
				A 08	4	9	229-18700
D 07	4	7	110-05204	A 08	4	10	229-18106
D 07	4	8	B1408-552-000	A 08	4	11	229-06606
D 07	4	9	B1903-552-000	A 08	4	12	229-18304
D 07	4	10	229-03157	A 08	4	13	401-06606
D 07	4	15	229-03108	A 08	4	15	401-06607
D 07	4	21	110-02508	A 08	4	21	401-05231
D 07	6	2	B1402-552-000-A	A 08	6	2	229-06101
D 07	6	6	B1414-555-000	A 08	6	6	400-90058
D 07	8	24	110-18207	A 08	8	24	229-20201
D 07	8	28	110-45952	A 08	8	28	229-44854
D 07	8	35	110-06004	A 08	8	35	229-07208
D 07	8	36	229-07000	A 08	8	36	400-17805
D 07	8	40	400-14007	A 08	8	40	400-60989
				A 08	10	11	229-10251
D 07	10	12	110-08208	A 08	10	12	229-10202
D 07	10	15	110-14008	A 08	10	15	229-15003
D 07	10	19	110-10154	A 08	10	19	229-12257
D 07	10	20	110-10410	A 08	10	20	229-12505
D 07	10	60	110-08703	A 08	10	60	400-89548
D 07	10	64	229-12604	A 08	10	64	401-00084
D 07	10	65	110-10709	A 08	10	65	229-12802
D 07	10	66	110-08604	A 08	10	66	400-93417
D 07	12	6	110-40300	A 08	12	6	229-47907
D 07	12	23	110-42264	A 08	12	23	229-49762
D 07	12	38	229-49309	A 08	12	38	110-43700





# HOW TO MAKE USE OF THIS PARTS LIST

## 1.Explanation of codes

1)"\*"mark.....means this part is changed from the previous parts book.

As to the details of the change, refer to the "List for information of change".

2)"#01".....refer to "Note" explanation at bottom of page.

## 2.Codes on the "Qty" column

· Each numeral indicates the number of parts required.

· "0.1" and "2.5" indicate the length (in meters) of the respective parts.

3.Parentheses mean that the corresponding part is a subpart that constructs an assembly part.

4.Dotted lines on the Figures indicate assembly parts.

## 1."注記"欄の記号説明

1) "\*"印.....前回のパーツブックに比較して今回変更された部品を意味します。

変更内容は、"変更情報リスト"を参照してください。

2) "#01".....ページ下の"注記"の説明を参照してください。

2.数量欄の数字は、個数を表し、0.1、2.5等の数値は、長さ（単位メートル）を表します。

3.数量欄の（ ）は、組部品を構成している子部品であることを意味します。

4.イラストページの-----枠は、組構成であることを意味します。